

The BMW D12 Marine Engine: 7.5 kW (10 bhp). Particularly suitable for sailing yachts and motor sailers up to approx 9 metres (30') and 3 tons.

This highly efficient marine diesel is ideally suited for medium-size sailing yachts. With its compact dimensions and sophisticated design with no exterior moving parts the BMW D12 is particularly safe and functional. Its high standard of fuel economy gives it an above-average cruising range, and with its outstanding running smoothness and the compensation shaft to neutralize vibrations, it makes even long voyages a real pleasure. The patented lubrication system allows permanent operation of the engine at an angle of heel of up to 25°. Another important advantage is the positive power-to-weight ratio, which in many cases dispenses with the need for a more powerful engine.

Special features:

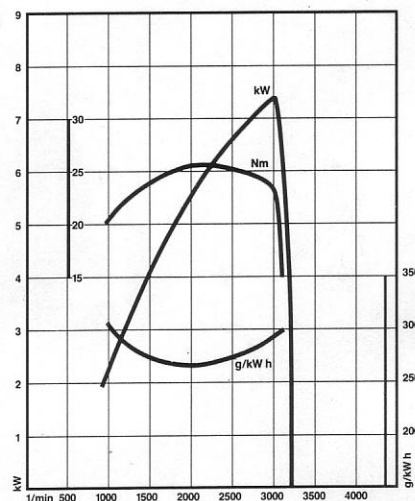
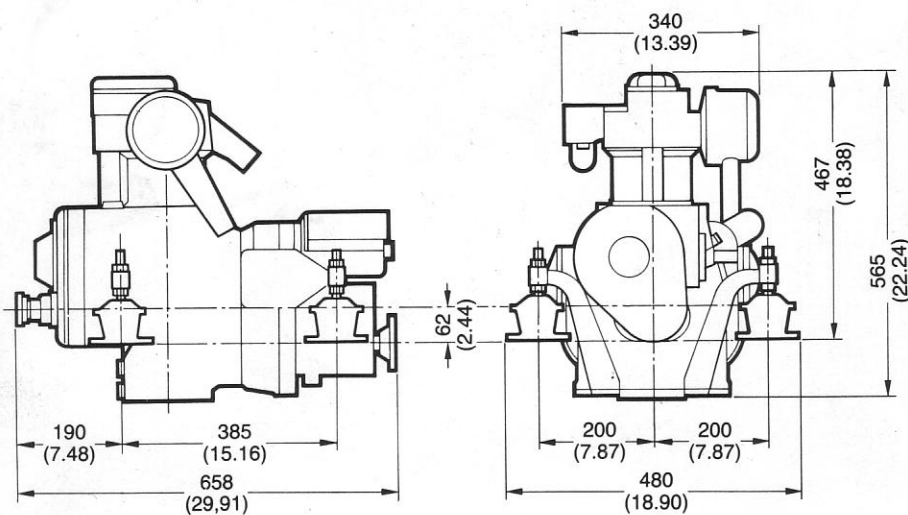
- Extremely low weight thanks to cast aluminium crankcase
- Compact dimensions – well fit into virtually any boat
- Operation at a permanent angle of heel of up to 25°
- No moving parts on the outside – and, therefore optimum safety against injuries
- Simple, inexpensive maintenance
- Optimum corrosion-proofing through two-component paintwork and two zinc anodes
- Bosch fuel injection pump with mechanical control and self bleeding – optimum combustion and clean exhaust emission
- Additional suppression of vibration by compensation shaft
- Flexible four-point engine mounts to minimize vibrations conveyed to the boat's hull
- Alternator (integrated in flywheel)

and a heavy duty starter

- Easy-to-operate manual starter with starting handle and automatic decompression
- Reduction-ratio reverse gearbox for a wide range of different applications
- Thermostat-controlled salt water cooling to provide a constant operating temperature
- Low fuel consumption: 2.2 ltr/0.48 Imp gals per operating hour at maximum output
- Fuel filter with water separator
- Air filter with air intake silencer
- Electrical wiring complying with the strict US Coast Guard regulations, resettable fuses to provide extra safety against overload
- Engine and gear box prepared by the factory for single-lever remote control of throttle and gear shift

Conclusion:

The D12 has a wide range of exceptional advantages. This applies not only to the D12 alone, but to all marine engines that bear the symbol of progressive engineering. BMW's complete range of marine engines for sailing boats and motor yachts offers all kinds of options and a wide choice of diesel and petrol units. You can choose from a wide range of optional extras and accessories to meet your personal requirements. And to make sure that you enjoy sheer boating pleasure for a long time to come, BMW Marine's international dealer organization has trained marine technicians at your service as well as a reliable and quick supply of parts.



Specifications D12

Displacement and output (DIN 6270 B)	Displacement 528 cc (32.2 cu in) Stroke 100 mm (3.94"), bore (3.23") Max continuous output 7.5 kW (10 bhp) at 3000 rpm Compression ratio 22:1
Design and installation	Water-cooled single-cylinder four-stroke engine in up-right position, swirl chamber process; forged-steel crankshaft with counter balance shaft Operation at a permanent angle of heel of up to 25° Flexible four-point engine mounts
Weight	Dry weight of the complete engine 108 kg (238 lb)
Valves	Valve drive: via rocker arms and tappet rods
Lubrication	Centrifugal forced-feed lubrication (splash lubrication)
Fuel supply system	Bosch fuel injection pump Optimum fuel/air mixture provided by flat-bottom swirlaction combustion chamber Air filter with air intake silencer Fuel supply by mechanical fuel pump with additional manual control
Engine cooling	Single-circuit cooling with camshaft driven water pump
Electrical system	350 W, 14 V, 25 A alternator 1.1 kW starter
Power transmission	Torsion damper between engine and gearbox
Reversing-type gearbox	Reversing-type gearbox with neutral position, forward and reverse Direction of rotation: clockwise in forward gear, on connection flange of reversing-type gearbox Standard ratio: forwards 2.7:1; reverse 1.9:1 alternative: 2.8:1; 2.3:1
Standard fittings	Manual starter with starting handle and automatic decompression, zinc anodes Fuel filter with water separator Engine with complete wiring loom and multi-pin plug, instrument panel with starter switch, battery charge indicator, coolant temperature indicator and two blank holes for additional instruments
Optional fittings	Single-lever control with cable, complete stern gear and exhaust system, various additional instruments Subject to change in design and technical features

V12 Engineering
Box 50, Ontario, Canada POX 1C0
www.bmwmarine.net

Your BMW Marine Dealer:

